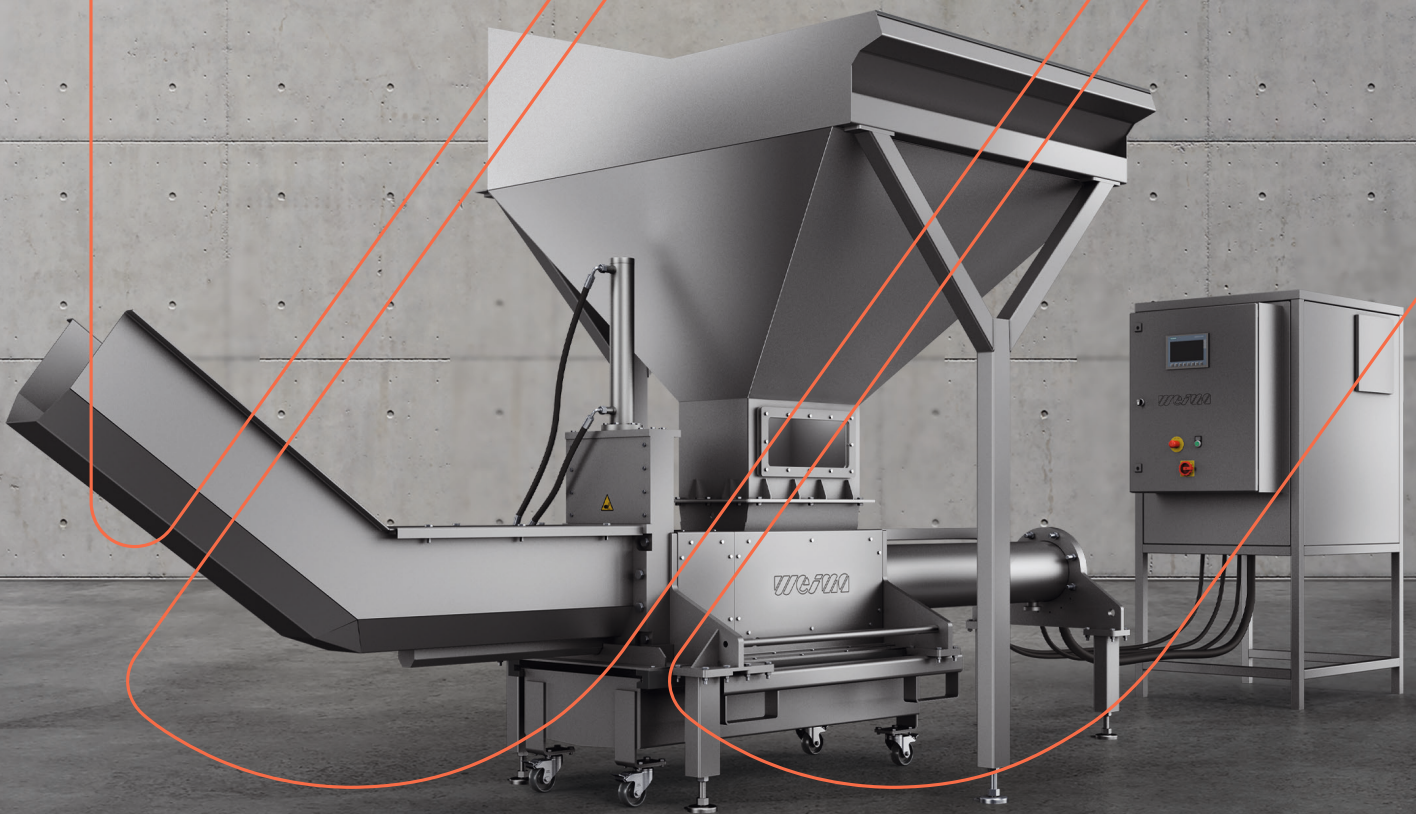


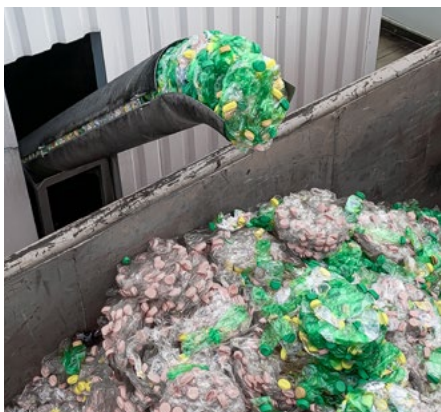


SHREDDING + COMPRESSING



**WEIMA PUEHLER G RECYCLING SERIES
DRAINAGE PRESSES**

TECHNICAL HIGHLIGHTS



Flexible discharge due to increased discharge height and individual discharge length

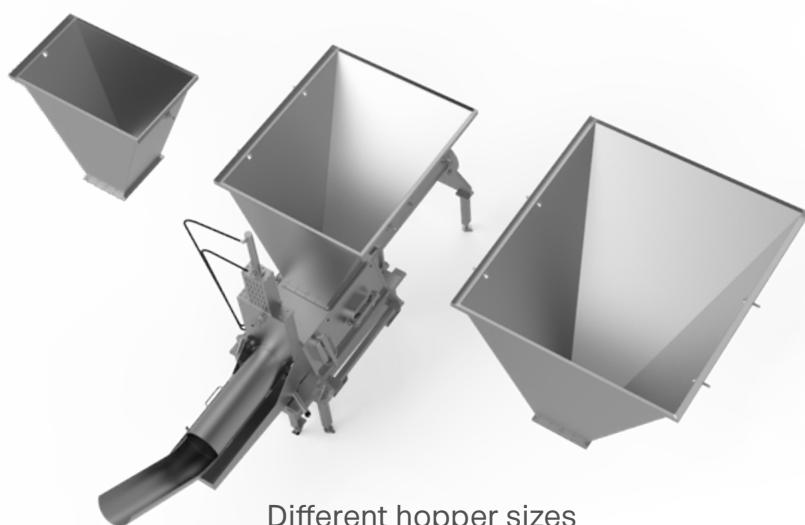
The length of the discharge pipe can be extended individually up to five meters. In contrast to a screw press, no conveyor belt is necessary for the discharge into a container or a tipping trough due to the increased discharge of the PUEHLER presses. Thus, the press can be optimally placed according to your spatial requirements.



Automated operation

in your production line

In order to be able to use the press in fully automated operation, the feed hopper can be equipped with a filling level sensor. With its help, upstream systems (conveyor belt) can be stopped/started automatically as soon as the maximum filling quantity of the hopper is reached. A continuous material flow prevents overfilling of the hopper.



Different hopper sizes for every application

You have the choice between different hopper volumes: 220 l, 600 l, 800 l, 1,200 l or 2,000 l. In addition, a manual or automatic hopper lid can be fitted as a safety and hygiene protection.

Pre-opening of packages with individually adjustable perforating rollers

The presses can be optionally equipped with perforating rollers. This allows packages to be opened gently before they are completely emptied by the press cylinder in the next step and then pressed into discs.



DID YOU KNOW?

In the PUEHLER G Recycling presses, food safe hydraulic oil is used as standard. If required, we replace this with a customer-specific hydraulic oil.

User-friendly touch display

for fast parameter changes
and diagnostics

The Siemens control system with touch display allows intuitive setting of parameters such as the press force and time or the repress function. Precise diagnostic messages ensure minimal downtime. In addition, complete networking in the PROFINET system is possible. In this way, upstream and downstream systems such as conveyor belts or a lifting and tilting station can be controlled in a user-friendly manner.



MULTI-SHIFT OPERATION POSSIBLE

through hydraulic oil cooling

The use in automated multi-shift operation is possible without any problems. Thanks to oil cooling using the heat exchanger method, the hydraulic oil can be kept at a constant operating temperature without overheating.



TECHNICAL HIGHLIGHTS

DID YOU KNOW?

To ensure the long-term use of the PUEHLER G Recycling series, we use high-quality stainless steel. This protects the machine body and the control cabinet from wear and corrosion while simultaneously remaining low-maintenance and hygienic.

Automated liquid discharge thanks to level detection in the drain pan

If required, liquid discharge can be automated with the aid of level sensors in the product drain pan. The level sensors control the pumping out of the pressed material and automatically switch off the recycling press when downstream processes come to a standstill. We use screw pumps to discharge pasty liquids and radial pumps for liquid materials.



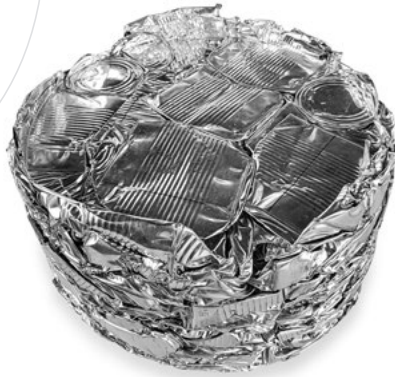
EASY CLEANING AND MAINTENANCE

thanks to optional pre-cleaning system and maintenance hatches

If required, the machines of the G Recycling series can be equipped with a pre-cleaning system. A multitude of nozzles mounted inside the press pre-clean the press and loosen coarse material residues. This simplifies subsequent manual cleaning. Five maintenance hatches facilitate access to the machine for cleaning as well as any maintenance work.

Increased throughput due to double-pump hydraulics

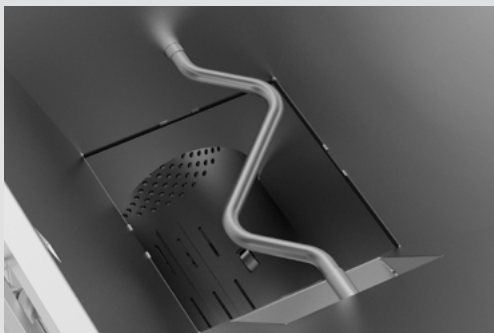
The G.300 Recycling press can be optionally equipped with double-pump hydraulics. This makes it possible to double the return speed of the press ram and thus increase the throughput to a maximum.



Clean discs

thanks to a post-cleaning unit

In order to rinse off any remaining product buildup (e.g. yogurt residues) from the discs, a post-cleaning unit in the form of spray nozzles can be fitted to the discharge tube. The cooling water from the oil cooling system can be used for this purpose.

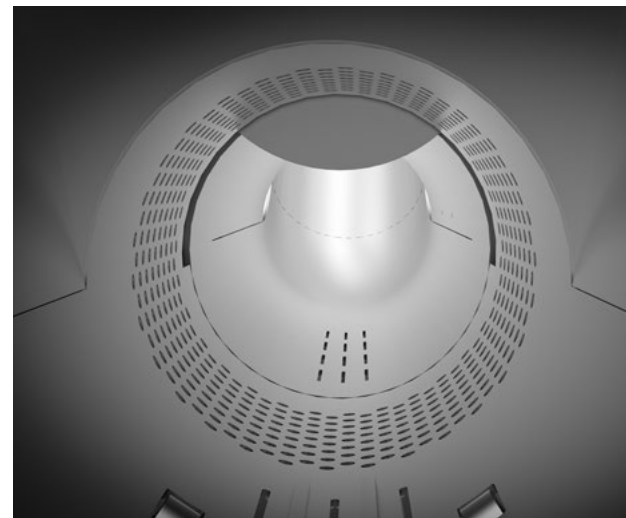
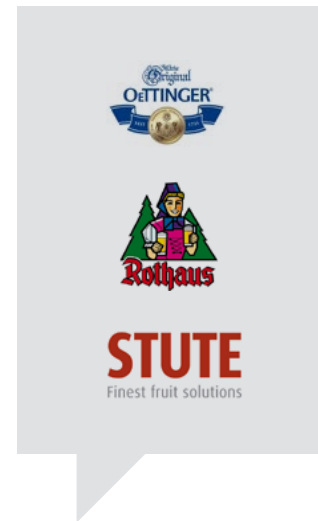


No material bridges

thanks to horizontal agitator

A horizontal agitator in the feed hopper can be selected as an option. Continuous material circulation prevents bridging in the hopper and thus ensures constant material feed.

References



Individual screen sizes

for all types of packaging

The wall of the pressing chamber is perforated to allow the emptied liquid to drain off. The screen size can be individually adapted to your material properties. For pasty materials such as yogurt or sour cream, round holes up to twelve mm in diameter are usually selected. For liquids, on the other hand, screen holes as small as 4 mm are possible. In any case, it is important that fine particles from the packaging do not get into the drain pan together with the liquid.

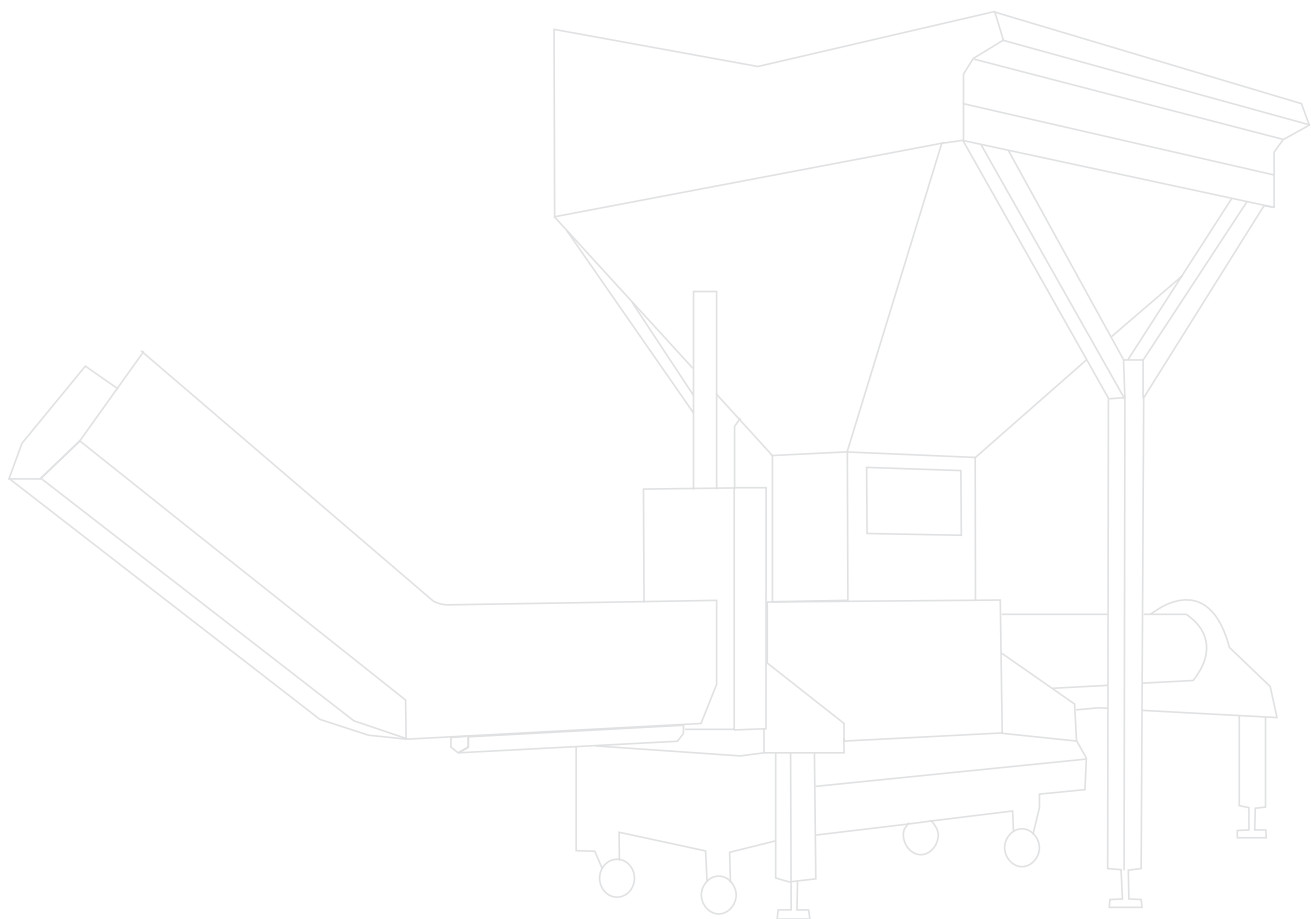


TECHNICAL DATA AND MACHINE CONFIGURATION

● Technical data PUEHLER G Recycling series

	G.200 Recycling	G.300 Recycling	G.300 Duo Recycling
Disc diameter [mm]	200	300	300
Throughput rate [m³/h] ¹⁾	up to 6	up to 12	up to 22
Performance	5.5 kW 400 V 50 Hz	7.5 kW 400 V 50 Hz	15 kW 400 V 50 Hz
Residual moisture	3 - 30%	3 - 30%	3 - 30%
Space requirement (L×W×H) [approx. mm] ²⁾	3,900 × 1,200 × 2,200	4,400 × 1,300 × 2,400	4,400 × 2,000 × 2,400

1) depending on material
2) detailed dimensions upon request



Machine configuration PUEHLER G Recycling series

● Standard ○ Optional – Not available

	G.200 Recycling	G.300 Recycling	G.300 Duo Recycling
MATERIAL FEED			
Hopper 220 l	○	–	–
Hopper 600 l	●	●	○
Hopper 800 l	○	○	○
Hopper 1,200 l	○	○	●
Hopper 2,000 l	–	–	○
Hopper (600 l) with double needle roller and swivel flap	○	○	○
Hopper (600 l) with knife shredder and swivel flap	○	○	○
Hopper extension	○	○	○
Lid Grid	○	○	○
Agitator	○	○	○
Needle roller unit	○	○	○
MATERIAL DISCHARGE			
Drain pan (120 l)	●	–	–
Drain pan (200 l)	○	●	●
Stainless steel centrifugal pump (at drain pan)	○	○	○
Stainless steel pump including level probe	○	○	○
Screw pump (at drain pan)	○	○	○
Orbital screw pump	○	○	○
Level sensors	○	○	○
Quick couplings	○	○	○
HYDRAULICS			
Hydraulic press stamp	●	●	●
Cutting plate on press stamp	○	○	○
Aluminum hydraulic tank (100 l)	●	●	–
Aluminum hydraulic tank (200 l)	–	–	●
Pre-cleaning system CIP piping	○	○	○
ELECTRICAL			
Control cabinet with Siemens PLC control	●	●	●
Electrical connection for accessories	●	●	●

Other variations, special equipment and technical modifications are available upon request.



WEIMA Maschinenbau GmbH | weima.com

Bustadt 6-10 | 74360 Ilsfeld (Germany) | Phone: +49 (0)70 62 95 70-0 | Fax: +49 (0)70 62 95 70-92 | info@weima.com

Subject to technical changes | 01082021